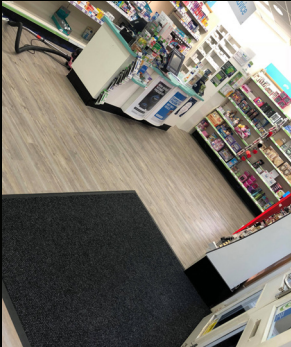


UltraFloor prescribed at Well Pharmacy



One of Manchester's most well regarded commercial flooring companies have used Level IT Two to install 15sqm of new flooring at a Well Pharmacy store.

CONTRACTOR: G J FLOORING SPECIALISTS LTD

MATERIALS USED: LEVEL IT TWO

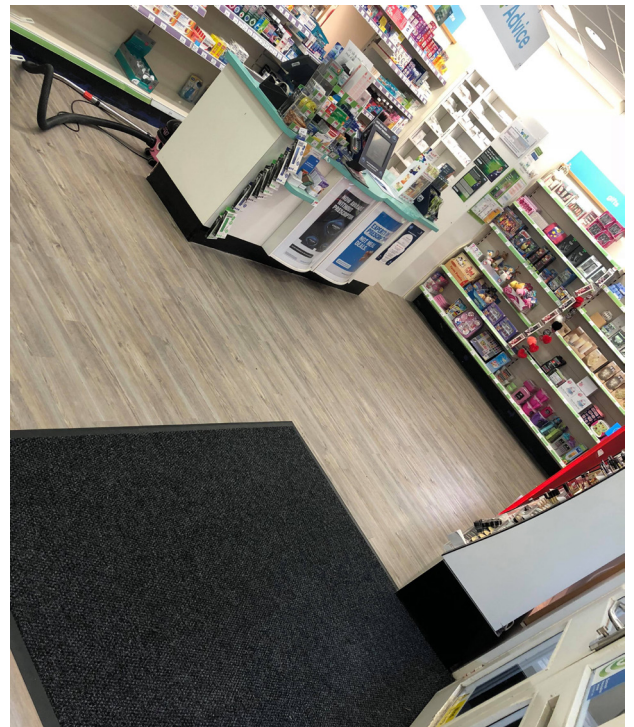
CFA members, G J Flooring Specialists Ltd. secured a contract to install 15sqm of Altro Walkway Vinyl flooring at the Newcastle Upon Tyne Well Pharmacy branch.

Time was the biggest challenge for the G J Flooring Specialists team. Well Pharmacy provides invaluable care and services to residents and closing, even for one day, was not an option. Therefore all subfloor preparation needed to be completed and the new flooring installed, after the pharmacy closed at the end of the day and before it opened again the next morning.

UltraFloor and G J Flooring Specialists Ltd. have partnered together regularly on several projects with UltraFloor products providing quality, fast setting solutions every time.

Familiar with the outstanding performance of UltraFloor's subfloor preparation materials, G J Flooring Specialists Ltd. were confident they would complete the project in time and get the job done with ease.

After the existing floor covering had been uplifted and the concrete substrate primed, Level IT Two was trowel applied at a 3mm depth across the 15sqm area.



There are many reasons why Level IT Two has become UltraFloor's most popular floor leveller. Its exceptional flow characteristics make it a very easy material to apply to a variety of subfloors in both commercial and domestic flooring projects. Its low odour formulation means this fantastic all-rounder leveller is equally suited to confined areas, proving particularly popular in the education, health and hospitality sectors.

With a set time of 2.5 hours, Level IT Two can receive bonded floor coverings after just 8 hours, making it an ideal choice for projects with a tight deadline, such as this one. What's more, because Level IT Two is available as a two component system, it takes the guesswork out of mixing, reducing site errors and guaranteeing a perfect application every time.

The entire job took just 10 hours from start to finish, allowing the Well Pharmacy store to open its doors on time, the very next day.

On completing the installation, David Marsh, Manager at G J Flooring Specialists Ltd. commented:

"The finished floor looked great. Very happy customers."

