

UltraFloor sets up shop at Wimbledon Quarter shopping centre



UltraFloor are delighted to partner with Specialist Flooring Group to install 1800sqm of ceramic tiles at Wimbledon Quarter – an exciting new shopping centre.

CONTRACTOR: SPECIALIST FLOORING GROUP

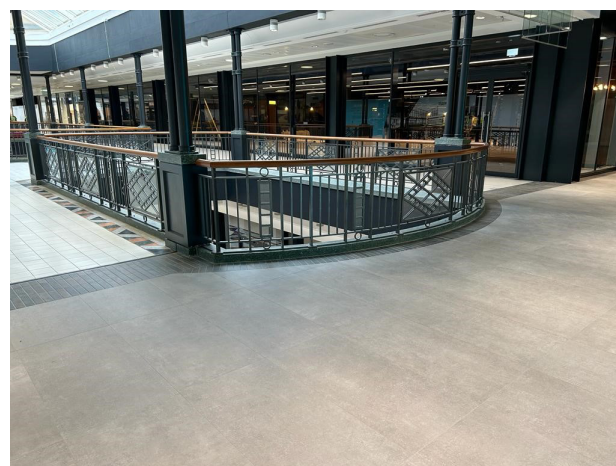
MATERIALS USED: LEVEL IT HYDRA BOND

Centre Court Shopping Centre, now known as Wimbledon Quarter, has undergone an incredible transformation to become a local neighbourhood hub. The stunning community space ‘encourages social interactions, events and gatherings.’ With places to eat, shop and work, Wimbledon Quarter provides the perfect place for people to ‘connect, engage and thrive.’

Specialist skills and expert workmanship was required for such a big project. Located in a highly trafficked area, ensuring the correct materials were used to install the different tiles was paramount to success.

“We have a great relationship with Instarmac. We use UltraFloor materials as they are of a great standard, and we receive amazing technical support from the UltraFloor team. This ranges from site visits to having specifications written for us for certain projects.

“For this project, Instarmac’s Crystal Hopkins, and Alan Collins, visited the site, along with a representative of SFG, to confirm a specification for these works. This was very helpful as it meant we could keep the screed, smoothing compound, adhesive and grout, all under the Instarmac umbrella.” Riley Goatham, Project Coordinator at Specialist Flooring Group.



To begin, Specialist Flooring Group’s screeding team installed UltraFloor Screed IT UltraCem fibre modified cement binder across the 1800sqm area, before handing over to their flooring division to carry out the remainder of the subfloor preparation, by trowel applying UltraFloor Level IT Hydra Bond up to 5mm.

Level IT Hydra Bond is a ground-breaking, water-based floor leveller that can be applied to bitumen and adhesive residues. Formulated for use in highly trafficked areas, Level IT Hydra Bond is guaranteed to have a super smooth finish and is easy to apply – ideal for creating a lump-free subfloor, eliminating dangerous trip hazards for visitors and staff when moving around the shopping centre.



What's more, Level IT Hydra Bond utilises UltraFloor's unique Envirobead® technology – a process which enhances application and boasts unrivalled flow properties. It can receive bonded floor coverings after 4 hours and has an extended working time of 45 minutes for optimal usability.

With the substrate perfectly prepped, the team used UltraTile ProFlex S2 to fix the Domus Otta ceramic tiles, Acquastone Déco Nero Tiles and INTRAsystems Entrance Matting.

For the final flourish, UltraTile ProGrout Flexible was used in Grey and Silver Grey to grout the beautiful ceramic tiles.

The work at Wimbledon Quarter completed on time with residents and visitors now enjoying these fantastic new facilities. On using UltraFloor, Riley continued: **“UltraFloor materials were great for this project, as always. We had superb support from the start until the very end. Thank you Instarmac.”**