

Victorian Hallway Mosaic Installation



Westwoods Tiling recently completed a 15sqm tiling project in a private property, transforming a traditional Victorian hallway with elegant London Mosaic sheeted Victorian tiles.

CONTRACTOR: WESTWOODS TILING

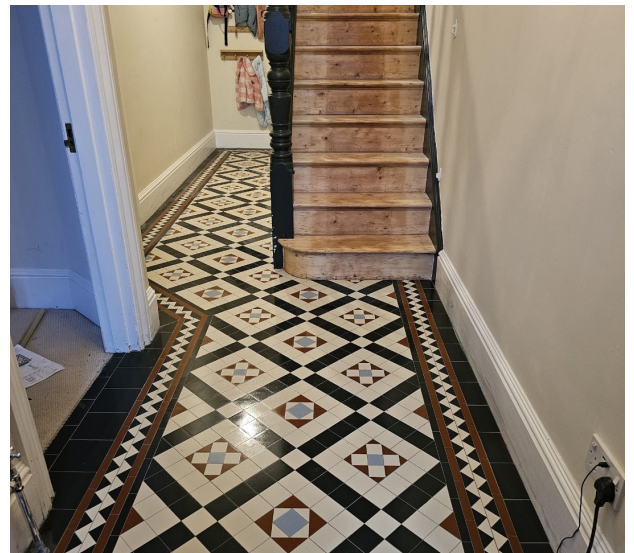
MATERIALS USED: PROFLEX SP, PROGROUT FLEXIBLE

The project involved careful preparation of the existing wooden floorboards, which were secured and reinforced with Hardie Backer Board to create a stable, long-lasting base for the tiles.

Westwoods Tiling relied on UltraTile products to achieve a professional finish. ProLevel Rapid was used to quickly level the floor, allowing for a fast turnaround. ProLevel Rapid is a single part, high-strength cementitious smoothing underlayment engineered for fast-track flooring projects. Thanks to its fibre-reinforced formulation, it provides exceptional strength and flexibility – especially useful on timber subfloors or underfloor heating.

ProPrimer ensured excellence adhesion between the substrate and the tiles. ProFlex SP adhesive in grey provided a strong and flexible bond for the mosaic tiles, while ProGrout Flexible in Grey delivered a perfect colour match and durable grout finish.

UltraTile ProFlex SP is a single-part, fast-setting, flexible tile adhesive designed for use on both walls and floors. It offers enhanced adhesion and flexibility, classified as S1 under EN 12004, making it suitable for substrates that may experience slight movement – such as timber floors, underfloor heating, or vibrating surfaces.



Available in 14 gorgeous tones to suit all designs and tastes, ProGrout Flexible is suitable for use with all tile types and can be washed down easily with minimal effort. Designed for areas where movement and vibration is likely, ProGrout Flexible is suitable for joint widths up to 20mm, is mould resistant, and will set in just 12 hours.

Furthermore, ProGrout Flexible has been developed using ColourShield Technology – a process which involves the addition of a specialist additive for lasting colour protection.

The project was completed with ProSealer silicone, which efficiently sealed the tiles and dried quickly for a polished look.

UltraTile ProSealer is a 310ml neutral-cure silicone sealant for versatile use in both internal and external tiling applications. It offers high elasticity and a strong, water-resistant bond, making it ideal for joints that experience movement or temperature changes. It is resistant to mould and UV exposure, helping maintain colour stability over time.

Over the course of four days, the team secured the floorboards, installed the Hardie Backer Board, levelled the surface, and carefully set out and installed the mosaic tiles. Grout and sealer were applied to complete the installation. ProLevel Rapid made the preparation quick and efficient, the grey grout complemented the Victorian tiles beautifully, and ProSealer provided a clean, long-lasting seal.

This project demonstrates Westwoods Tiling's expertise in combining traditional Victorian aesthetics with modern materials. The careful preparation, expert installation, and high-quality products resulted in a hallway that is both stylish and durable, enhancing the character of the property while providing a long-lasting finish.

The finished Victorian hallway reflects the client's vision, with a beautifully tiled floor that blends classic design with practical durability, delivering a space that can be enjoyed for years to come.

On the performance of UltraTile, David Westwood of Westwoods Tiling, commented: **"ProLevel Rapid is awesome for quick turnaround. The grey grout was the perfect colour and the sealer is nice with good drying times."**

